

## 1. X-BANNER CONTENT AND GRAPHIC PREPARATION



### CONTENT



x1

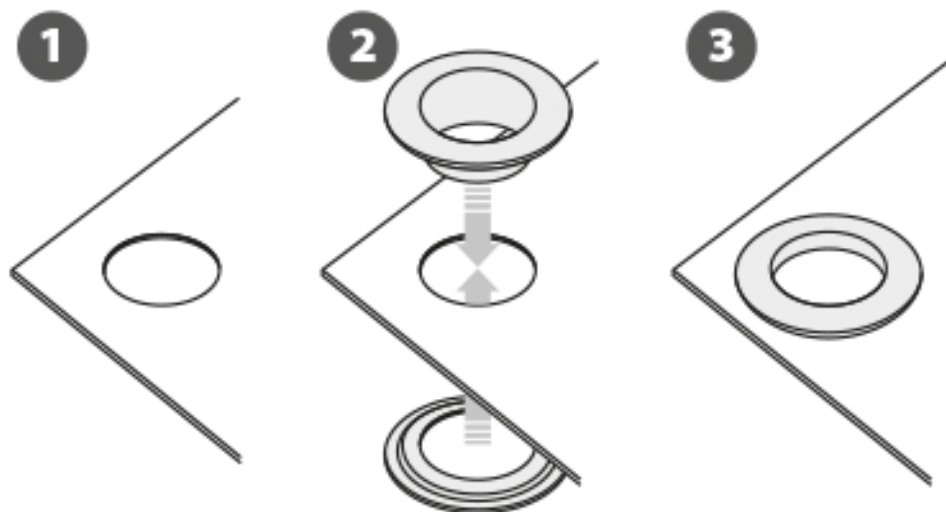


x2

Open the bag, check the content of the bag and take out all the pieces carefully.

To set-up the X-banner, first you must attach four eyelets to graphic corners (supplied separately).

### GRAPHIC ATTACHMENT BY EYELETS



## 2. SET UP THE X-BANNER STRUCTURE AND GRAPHIC ATTACHMENT

